

Electronic Data Interchange (EDI) Provider Training

Mississippi DOM EVV

July, 2023

The content contained herein ("Confidential Information") are the confidential property of HHAeXchange and may not be copied or distributed outside the HHAeXchange organization without the express written consent of HHAeXchange. Distribution of this document or disclosure of any Confidential Information set forth herein to any party other than the intended recipient(s) of this presentation is expressly prohibited.





Agenda



About HHAeXchange and
Mississippi DOM



Understanding the Integration
Process



Data Exchange Workflow –
Mississippi



Services Provided



Upcoming Provider Steps



Contact Information

Mississippi DOM and EVV



- Cures Act Mandate in effect as of **January 1st**, 2021
- Mississippi DOM is an **open model state as of February 1, 2023**
- Mississippi DOM waiver providers must implement EVV by **August 1, 2023**
- HHAeXchange has been selected **as the State Aggregator** and collect all visit data for Mississippi EVV, regardless of the EVV system being used

Provider Options



Provider Options:

- Option 2– Agencies currently using another 3rd Party EVV Solution: use your existing EVV system and import visit data into HHeXchange– HHA will route visit data to Mississippi DOM.



Understanding the Integration Process

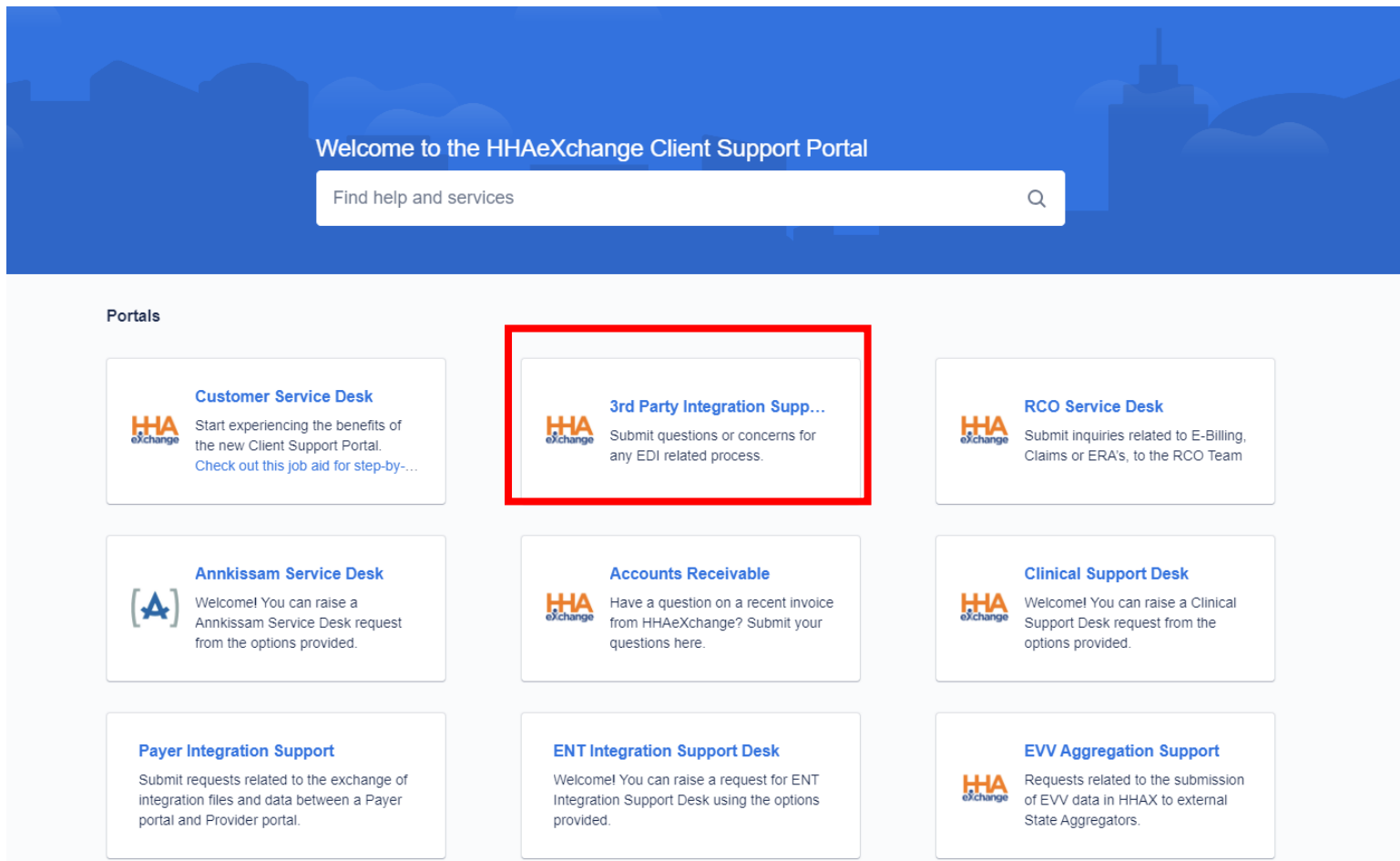


Preparing Providers for MS EVV Onboarding








- Prepare for EVV Integration with HHAX by:
 - Complete the Mississippi Medicaid – HHAX EVV Provider Set Up Form
 - [Mississippi DOM Provider Set Up Form \(cognitoforms.com\)](https://cognitoforms.com)
 - Reviewing the Business Requirements document & data specifications found here:
 - [Business Requirements for Third Party EVV Data Aggregation](#)
 - [HHAeXchange EVV API Technical Specifications MS](#)
 - Please note, these documents are also located on the [Mississippi Provider Information Center](#).
- Complete provider attestation found in the BRD:
 - [Third Party EVV Attestation - MS \(cognitoforms.com\)](#)

Preparing Providers for MS EVV Onboarding

- Contact HHAX Provider Integration team to begin onboarding process:
 - Submit a request through the Client Support Portal at hhaexchange.com/supportrequest

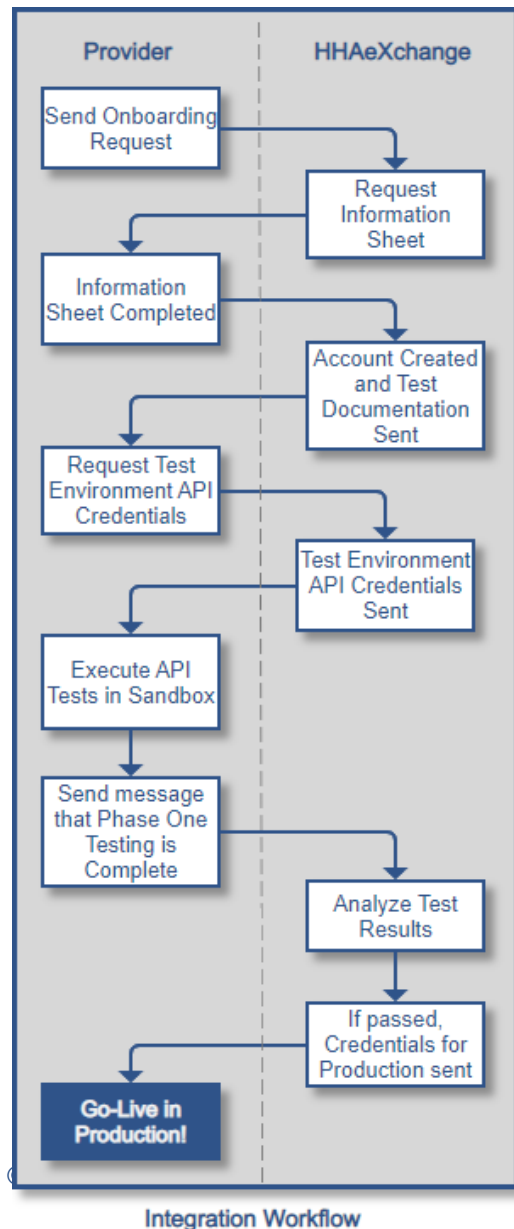


The screenshot shows the HHAeXchange Client Support Portal. At the top, a blue banner reads "Welcome to the HHAeXchange Client Support Portal" with a search bar below it containing the text "Find help and services". Below the banner, a section titled "Portals" displays a grid of nine service desk options. The "3rd Party Integration Support" option is highlighted with a red border. Each option includes the HHAeXchange logo, a title, and a brief description.

Portals		
 Customer Service Desk Start experiencing the benefits of the new Client Support Portal. Check out this job aid for step-by-...	 3rd Party Integration Supp... Submit questions or concerns for any EDI related process.	 RCO Service Desk Submit inquiries related to E-Billing, Claims or ERA's, to the RCO Team
 Annikissam Service Desk Welcome! You can raise a Annikissam Service Desk request from the options provided.	 Accounts Receivable Have a question on a recent invoice from HHAeXchange? Submit your questions here.	 Clinical Support Desk Welcome! You can raise a Clinical Support Desk request from the options provided.
Payer Integration Support Submit requests related to the exchange of integration files and data between a Payer portal and Provider portal.	ENT Integration Support Desk Welcome! You can raise a request for ENT Integration Support Desk using the options provided.	 EVV Aggregation Support Requests related to the submission of EVV data in HHAX to external State Aggregators.



Preparing Providers for Integration - Testing

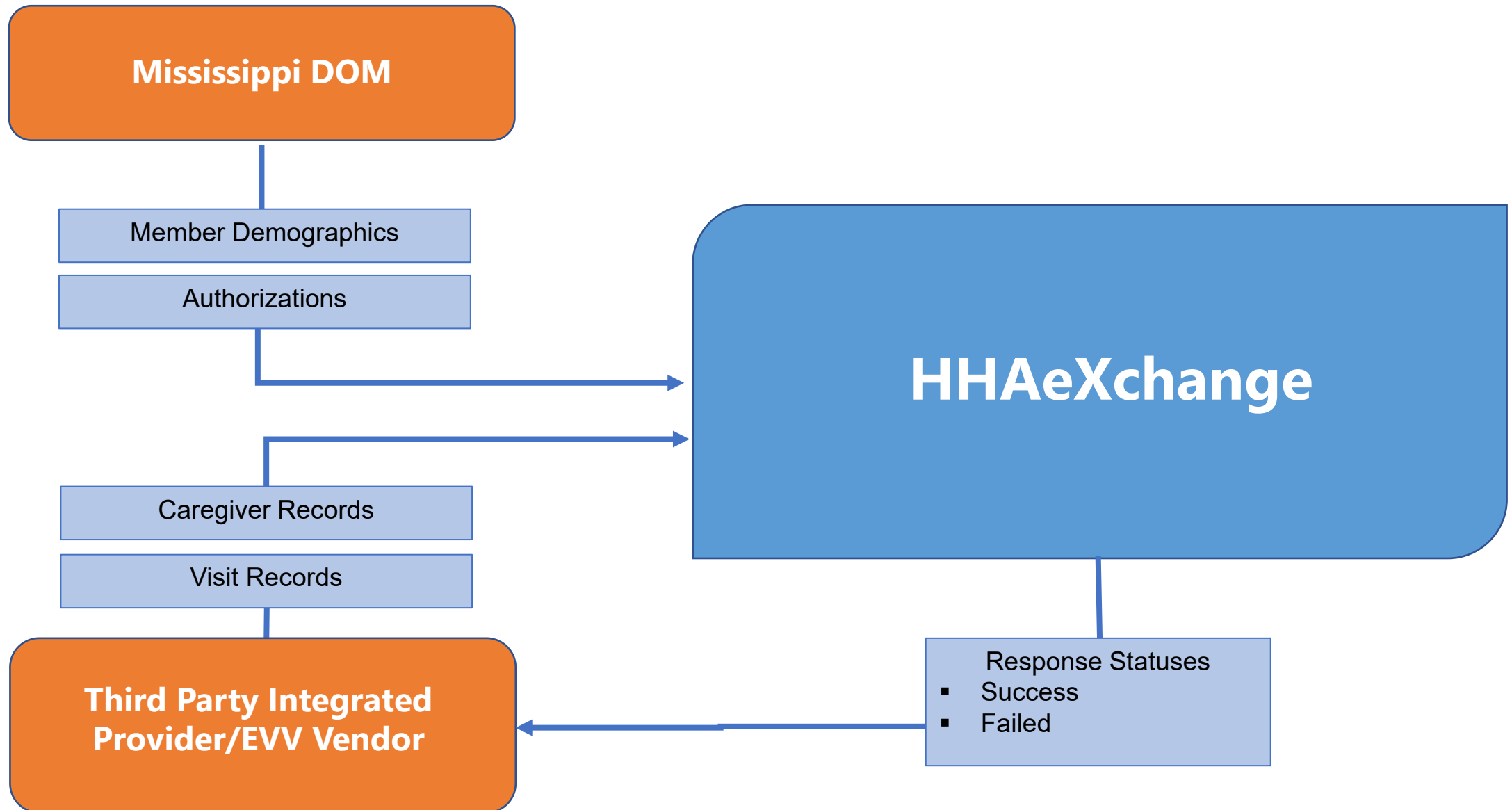


- **Prepare for EVV Integration Testing with HHAX by:**
 - Review HHAX Testing Process document
 - HHAX will provide this document once access to HHAX environment is confirmed by provider
 - HHAX will provide test member demographic & authorization data to providers to utilize during end-to-end testing
 - Message error codes begin on page 58 of the MS DOM EVV Data Aggregator Specification
 - [HHAExchange EVV API Technical Specifications MS](#)
 - Providers should contact HHAX Provider Integration team should you need assistance vis the [Client Support Portal](#)



Data Exchange Workflow

Data Exchange Workflow – Mississippi DOM EVV



- **Transmission Frequency and Limits**

For optimal system performance, HHAX recommends that visit data is sent in near real time. The expectation is that data is sent by the provider or EVV vendor to HHAX as it is added, changed, and/or deleted in the third party EVV system. Data that is unchanged should not be resent to HHAX. HHAX provides transaction statuses on a separate API call that is initiated by the third party EVV system. HHAX allows maximum five (5) calls per second per consumer.

- **Record Processing Workflow and Endpoints**

There are two types of messages provided to HHAX by the third-party provider or EVV vendor; (1) caregiver demographic data and (2) visit information. Note that caregiver data is to be sent to HHAX first as a record is required to HHAX for visit data to load successfully. The provider and/or EVV vendor provides data to HHAX in JSON format only.

- Caregiver records are required to be sent individually to the API.
- Visit Data can be batched; up to 100 records can be sent per request.



Services Included and Upcoming Provider Steps

Approved Services



Effective 8/1/23

Personal Care Services

In Home - Respite

Respite - Companion

Respite - Nursing

Home and Community Supports

Supported Living - Intermittent

Services Under Waiver(s):

- Elderly and Disabled (E&D)
- Independent Living (IL)
- Traumatic Brain Injury / Spinal Cord Injury (TBI/SCI)
- Intellectual Disabilities / Developmentally Disabled (ID/DD)
- Community Support Program (CSP)



Upcoming Provider Next Steps



Provider Onboarding Steps – EDI Providers

- Welcome Packet: *06/30/2023*
- EDI Provider Training:
 - 07/07/2023
 - 07/12/2023
 - 07/19/2023
- New Provider Portal Access: 07/17/2023
- System User Training: 07/18/2023 – 07/20/2023
 - LMS System Access: 07/12/2023
- Contract Linking: *07/24/2023*
- **Go-Live: *August 1, 2023***



HHaEXchange Support



State Info Hub

<https://www.hhaexchange.com/info-hub/mississippi>



Client Support Portal

<https://hhaexchange.com/supportrequest>



Phone

1-855-400-4429

Mississippi Payer Support



Email

EVV@medicaid.ms.gov



Phone

1-601-359-6141

Provider Resources